

Project \_\_\_\_\_

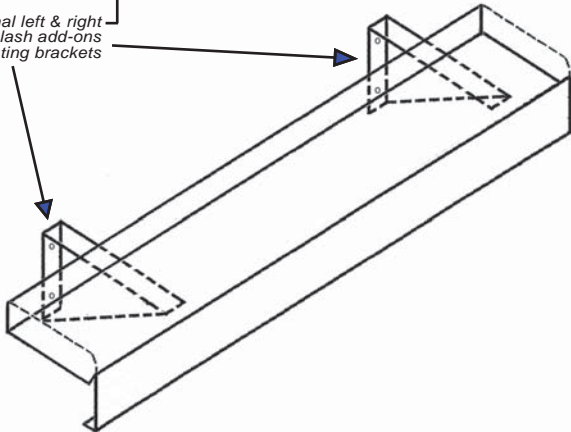
Dealer \_\_\_\_\_

Item # \_\_\_\_\_ Quantity \_\_\_\_\_

## SCUPPER RAIL

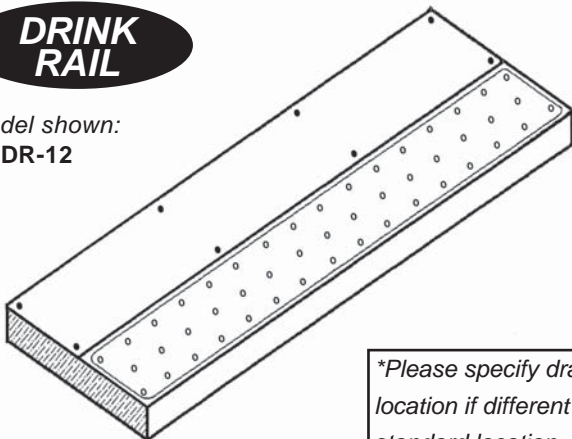
model shown:  
**NCSR-12-SSB-MB**

optional left & right  
side splash add-ons  
& mounting brackets



## DRINK RAIL

model shown:  
**NCDR-12**



*\*Please specify drain hole  
location if different from  
standard location*

## SCUPPER RAIL

NCSR - -

Width:  
Left to right  
dimension in inches

Options:  
MB - mounting brackets  
SSR/SSL/SSB - side splash add on  
M - modified size

## DRINK RAIL

NCDR - -

Width:  
Left to right  
dimension in inches

Options:  
M - modified size

## MODELS

Scupper Rails	length
<input type="checkbox"/> NCSR-12.....	12"
<input type="checkbox"/> NCSR-18.....	18"
<input type="checkbox"/> NCSR-24.....	24"
<input type="checkbox"/> NCSR-30.....	30"
<input type="checkbox"/> NCSR-36.....	36"
<input type="checkbox"/> NCSR-42.....	42"
<b>Drink Rails</b>	
<input type="checkbox"/> NCDR-12.....	12"
<input type="checkbox"/> NCDR-18.....	18"
<input type="checkbox"/> NCDR-24.....	24"
<input type="checkbox"/> NCDR-30.....	30"
<input type="checkbox"/> NCDR-36.....	36"
<input type="checkbox"/> NCDR-42.....	42"

*\*call factory for custom size(s)*

## STANDARD FEATURES

- All stainless steel construction
- 18 gauge #304 stainless steel pan
- Removable perforated insert (drink rail only)
- Drain consists of a 1/2" diameter s/s pipe 1" in length located in the center (drink rail only)

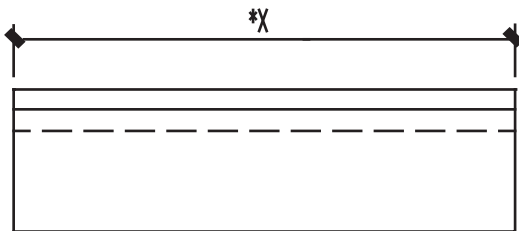
## OPTIONAL FEATURES

model #	description
<input type="checkbox"/> MB.....	mounting brackets - specify depth or mounting surface (suggested placement is 18" apart) (scupper rail only)
<input type="checkbox"/> SS_(L-left, R-right, B-both)...	side splash add on (scupper rail only)
<input type="checkbox"/> M.....	modified size

*\*see options section for more details*

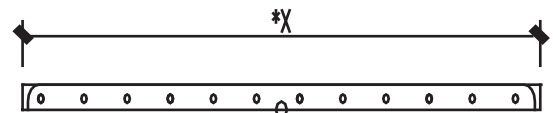
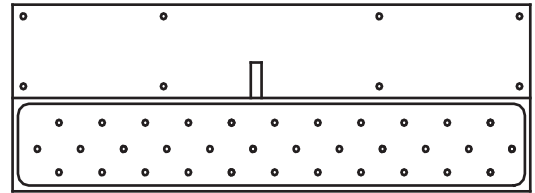


## SCUPPER RAIL



model shown:  
NCSR-\*X

## DRINK RAIL

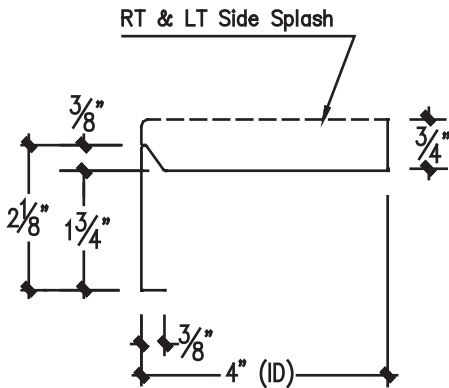


model shown:  
NCDR-\*X

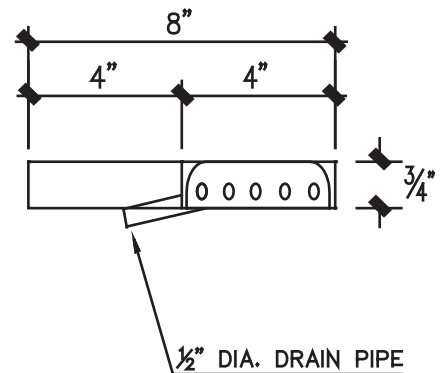
1/2" DIA. DRAIN PIPE

### TECHNICAL DATA

model #	length *X	shipping weight (lbs.)
<i>Scupper Rails</i>		
NCSR-12	12"	4
NCSR-18	18"	6
NCSR-24	24"	8
NCSR-30	30"	10
NCSR-36	36"	12
NCSR-42	42"	14
NCSR-48	48"	16
NCSR-54	54"	18
NCSR-60	60"	20
NCSR-66	66"	22
NCSR-72	72"	24
<i>Drink Rails</i>		
NCDR-12	12"	10
NCDR-18	18"	14
NCDR-24	24"	16
NCDR-30	30"	18
NCDR-36	36"	20
NCDR-42	42"	22
NCDR-48	48"	24
NCDR-54	54"	26
NCDR-60	60"	28
NCDR-66	66"	30
NCDR-72	72"	32



### SECTION (SCUPPER RAIL)



### SECTION (DRINK RAIL)